



UNIVERSITY OF  
**KWAZULU-NATAL**™  
INYUVESI  
**YAKWAZULU-NATALI**

# Engineering Progression Rules



EDGEWOOD CAMPUS



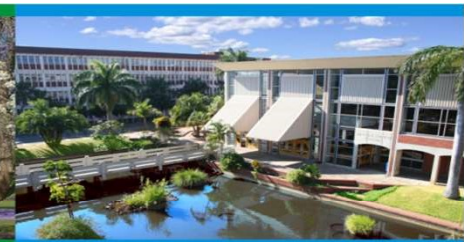
HOWARD COLLEGE CAMPUS



NELSON R MANDELA SCHOOL OF MEDICINE



PIETERMARITZBURG CAMPUS



WESTVILLE CAMPUS

INSPIRING GREATNESS

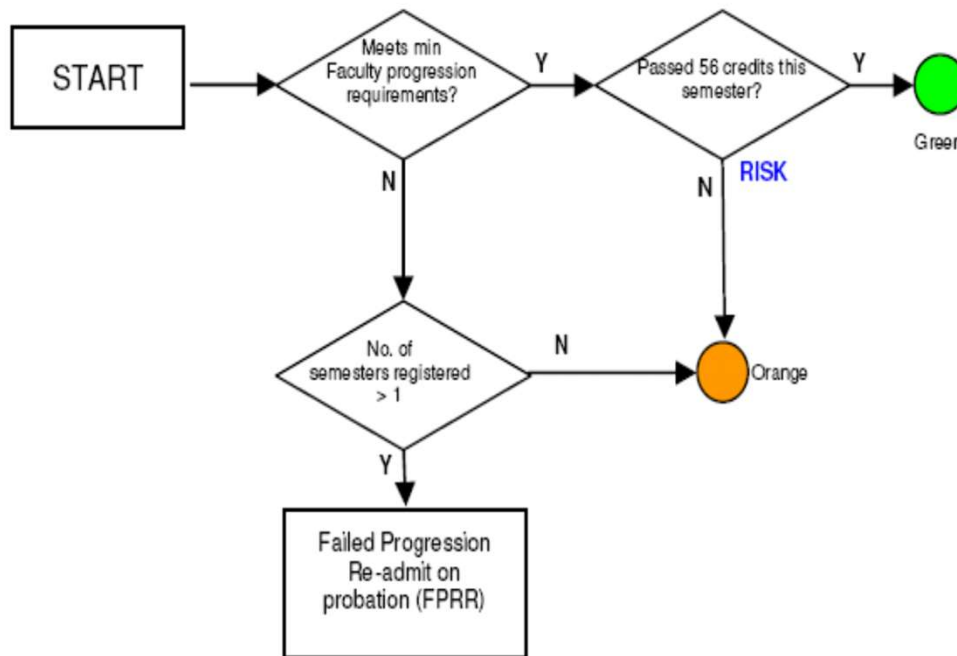
# Progression

---

- **Progression requirements (per semester)**
  - Normal: 72 credits = 720 hours for a “normal” student
  - Minimum: 48 credits
- **Risk**
  - Below 56 credits in a semester
- **Exclusion**
  - After 2 consecutive warnings (< 48 credits/semester)
  - Only one appeal is allowed
  - Re-admission (probation/conditional)
  - Re-direction (other College or institution)
- **Class of degree**
- **Certificates of merit**

# Progression

Students who were never previously below the minimum Faculty progression requirement.



Semesters	Minimum Progression	Maximum	75%
1	48	72	54
2	96	144	108
3	144	216	162
4	192	288	216
5	240	360	270
6	288	432	324
7	336	504	378
8	384	576	432
9	432		
10	480		
11	528		
12	576		

**Scary flowchart in College Handbook for under-performing students:  
Avoid this!**

# Progression

## What can happen?

- Excellent performance!  
4 Certificates of Merit + Dean's Commendation

ENG-CH : Bachelor of Science in Engineering (Chemical Engineering)				Full Time	
CHEM161	Chemical Engineering Chemistry 1	HA	16	89	PM Certificate c
ENCH1EA	Chemical Engineering Principles 1	HA	8	80	PM Certificate c
ENCH1TC	Technical Communication for Engineers	HA	8	75	P Pass
MATH131	Mathematics 1A Eng	HA	16	96	P Pass
MATH132	Applied Mathematics 1A (Eng)	HA	16	86	PM Certificate c
PHYS161	Chemical Engineering Physics 1A	HA	8	88	PM Certificate c
Earned For 2009 Block 1 :		-->	72	WAV :	87%
Deans Commendation					

- Poor performance: If your child is really not coping despite proper level of effort, consider other options

ENG-CH : Bachelor of Science in Engineering (Chemical Engineering)				Full Time	
CHEM161	Chemical Engineering Chemistry 1	HA	16	52	F Fail
ENCH1EA	Chemical Engineering Principles 1	HA	(8)	37	F Fail
ENCH1TC	Technical Communication for Engineers	HA	8	69	P Pass
MATH131	Mathematics 1A Eng	HA	(16)	26	F Fail
MATH132	Applied Mathematics 1A (Eng)	HA	(16)	34	F Fail
PHYS161	Chemical Engineering Physics 1A	HA	(8)	33	F Fail
Earned For 2009 Block 1 :		-->	24	WAV :	40%
Performance Unsatisfactory must consult Dean					

# Role of the College Office

- Staff help with academic administration
- Around 800 students for each admin officer so be nice, patient and polite!
- Applications
- Orientation
- Registration
- DP Appeals
- Graduations
- Withdrawals
- Exam Boards
- Exclusions

